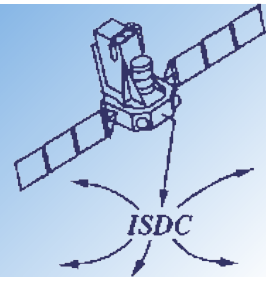
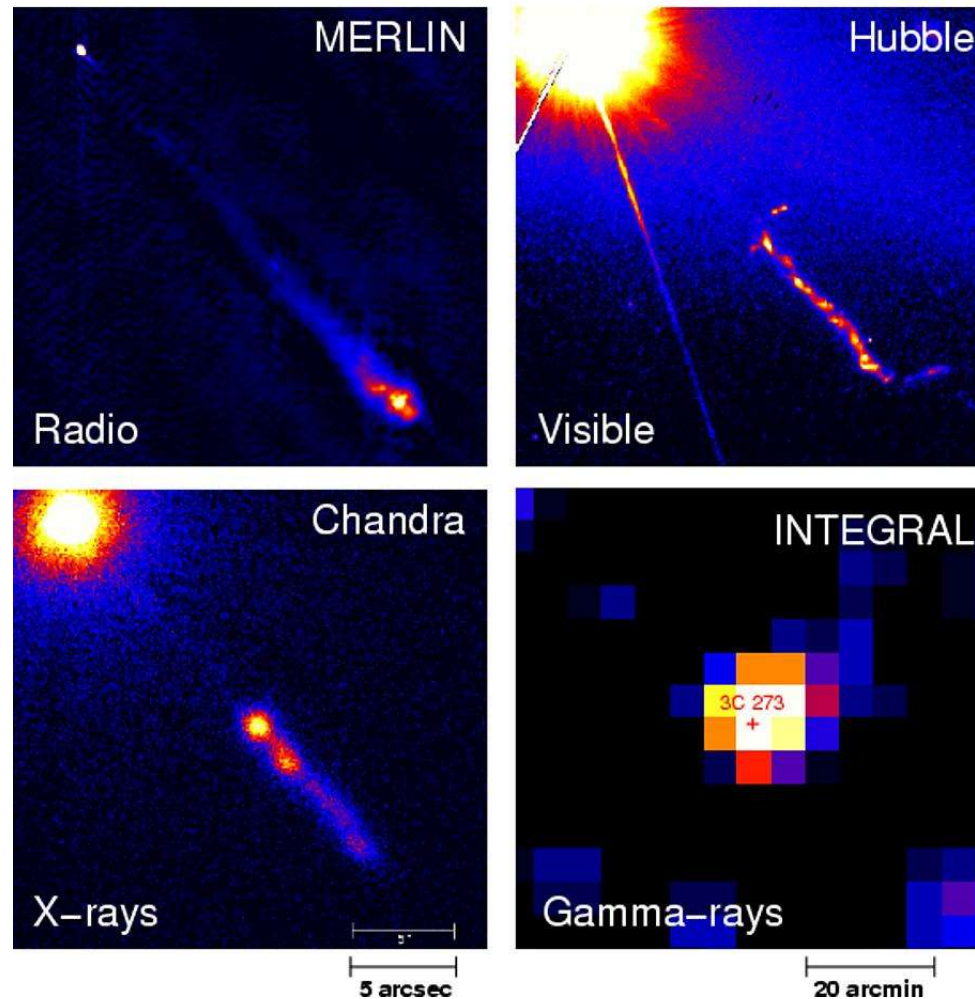


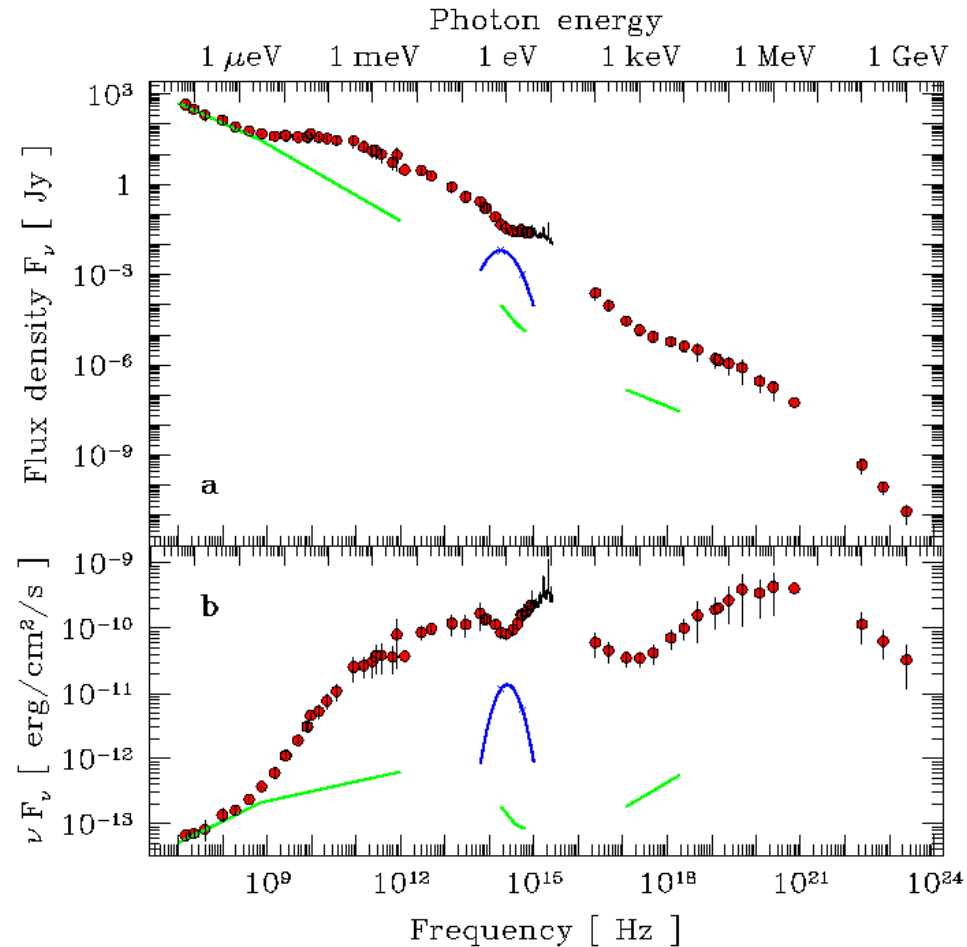
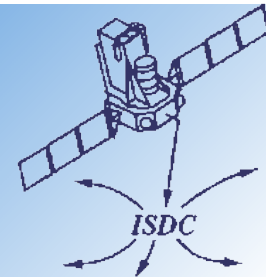
IBIS/ISGRI Analysis of faint source 3C273



Quasar 3C 273

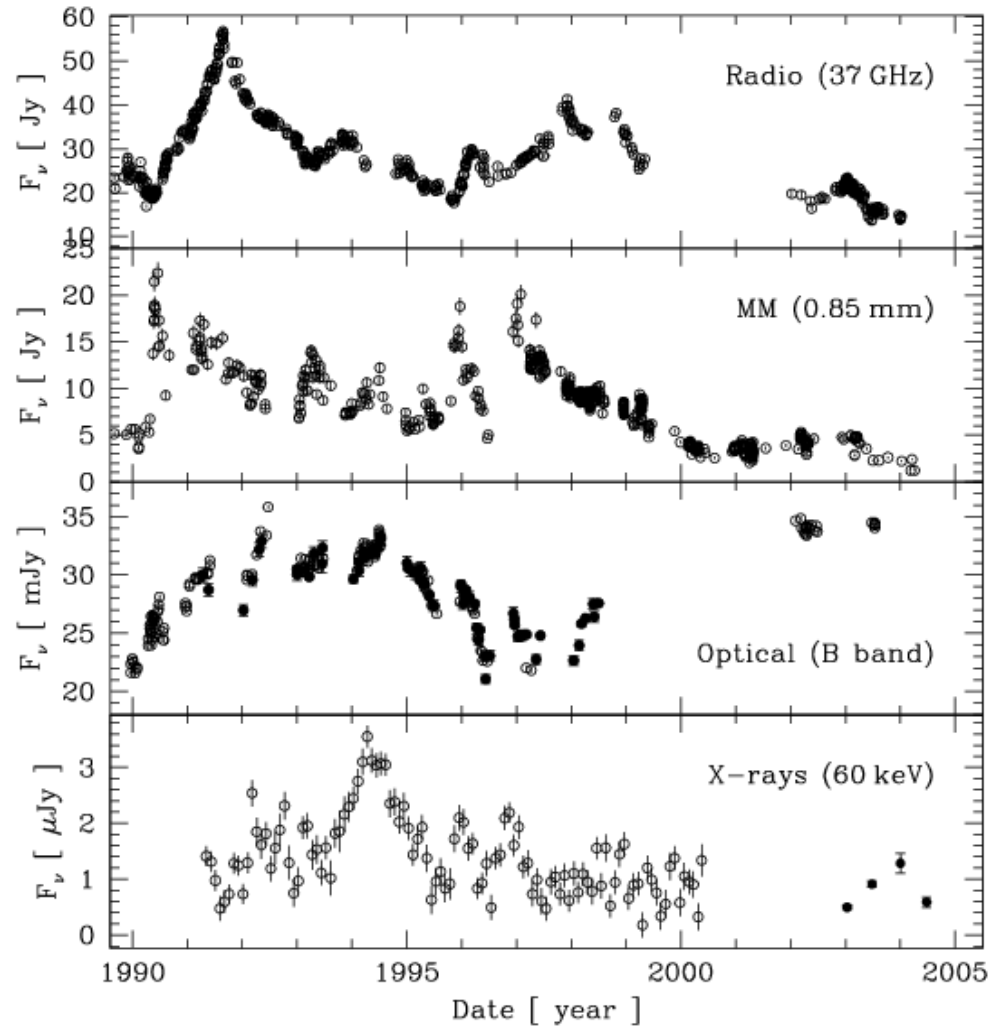
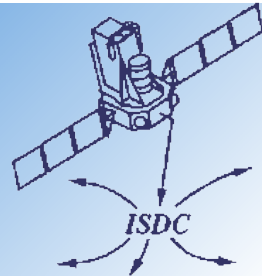


3C273 Average Spectrum

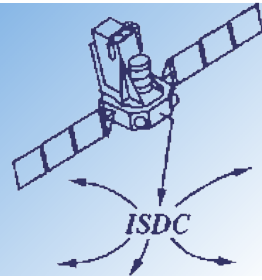


The green line shows approximately the contribution from the outer jet for the radio optical and X-ray parts. The contribution from the elliptical (E4) host galaxy is suggested by the blue line.

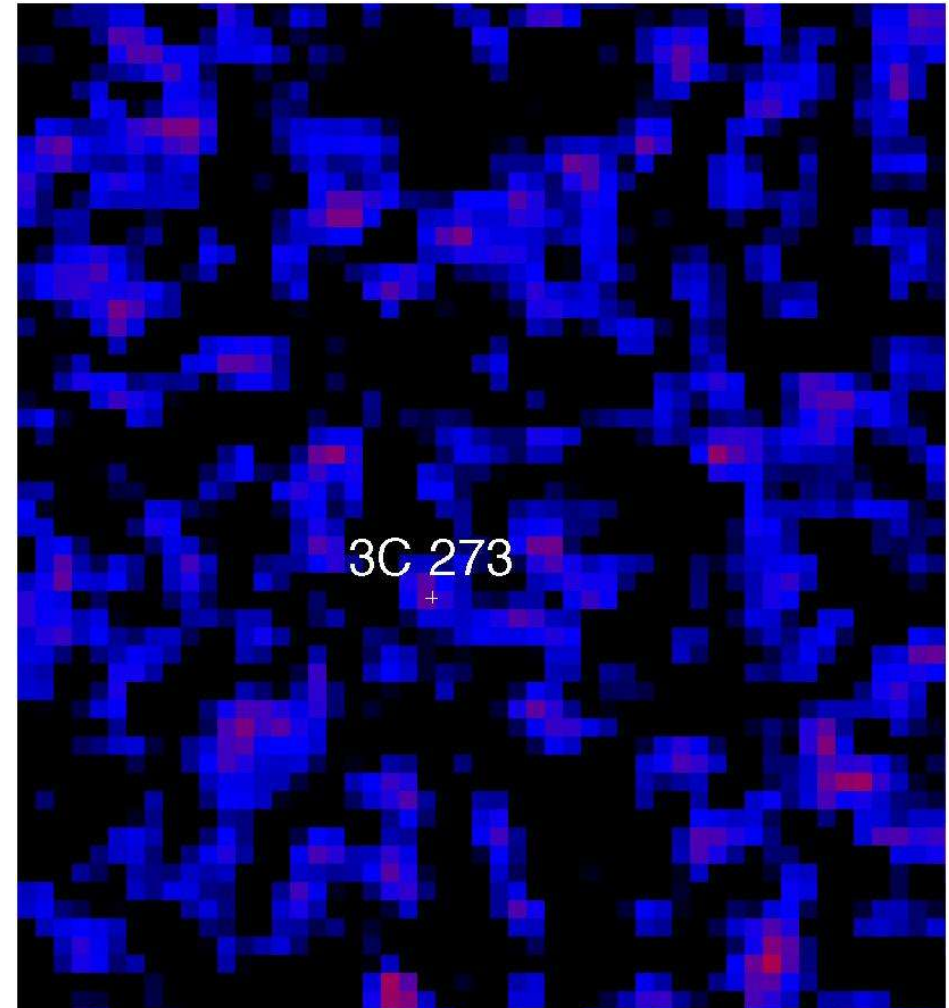
3C273 Flux History



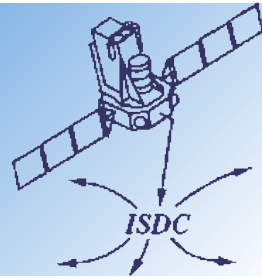
Single Science Window



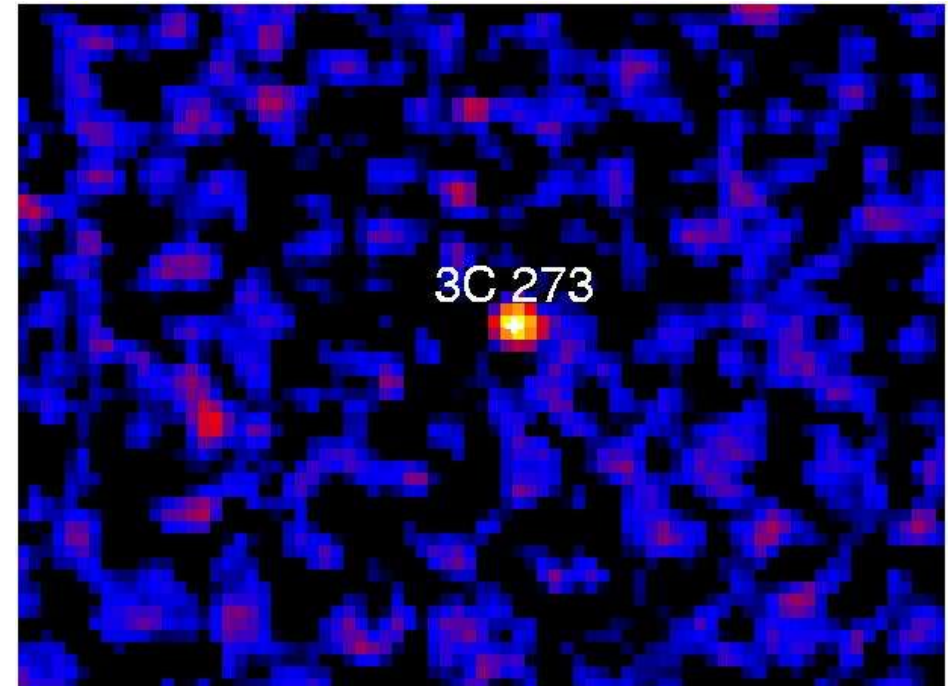
- ◆ startLevel="COR"
- ◆ endLevel="IMA"
- ◆ SWITCH_disablePICsIT=yes
- ◆ IBIS_II_ChanNum=3
- ◆ IBIS_II_E_band_min="20 40 60"
- ◆ IBIS_II_E_band_max="40 60 100"
- ◆ CAT_refCat="3C273_cat.fits[1]"
- ◆ OBS1_SearchMode=3
- ◆ OBS1_ToSearch=10
- ◆ OBS1_DoPart2=0



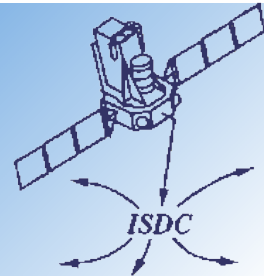
Mosaic



- ◆ startLevel="IMA"
- ◆ endLevel= "IMA"
- ◆ SWITCH_disablePICsIT=yes
- ◆ OBS1_DoPart2=2
- ◆ IBIS_II_ChanNum=3
- ◆ IBIS_II_E_band_min="20 40 60"
- ◆ IBIS_II_E_band_max="40 60 100"
- ◆ OBS1_SearchMode=3
- ◆ OBS1_ToSearch=10
- ◆ OBS1_MinCatSouSnr=2
- ◆ OBS1_MinNewSouSnr=7



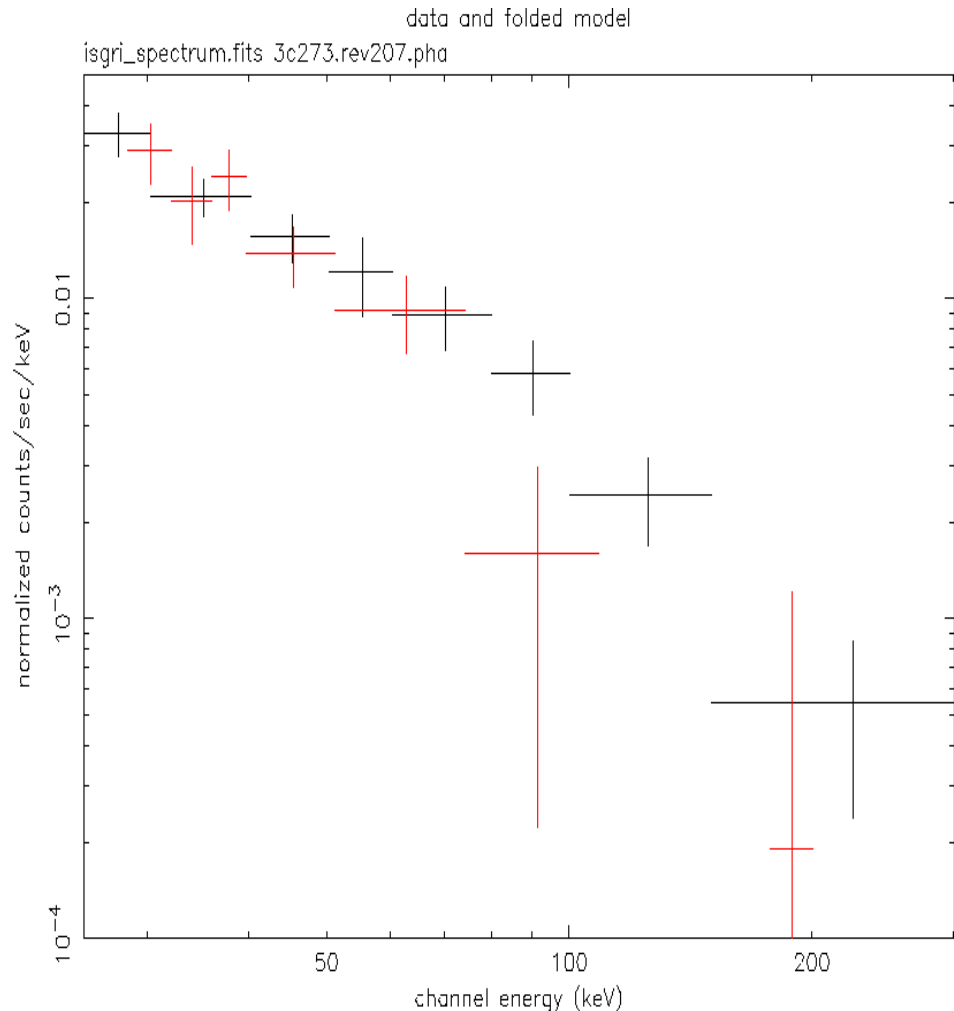
Spectral Extraction



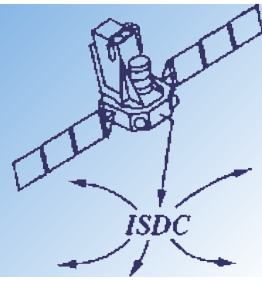
Method=1 (red points)

- ◆ startLevel="BIN_S"
- ◆ endLevel="SPE"
- ◆ IBIS_SI_inEnergyValues
- ◆ SCW2_cat_for_extract
- ◆ **Mosaic spectrum (black)**
- ◆ OBS1_PixSpread=0
- ◆ IBIS_II_ChanNum=10
- ◆ **weighted average**

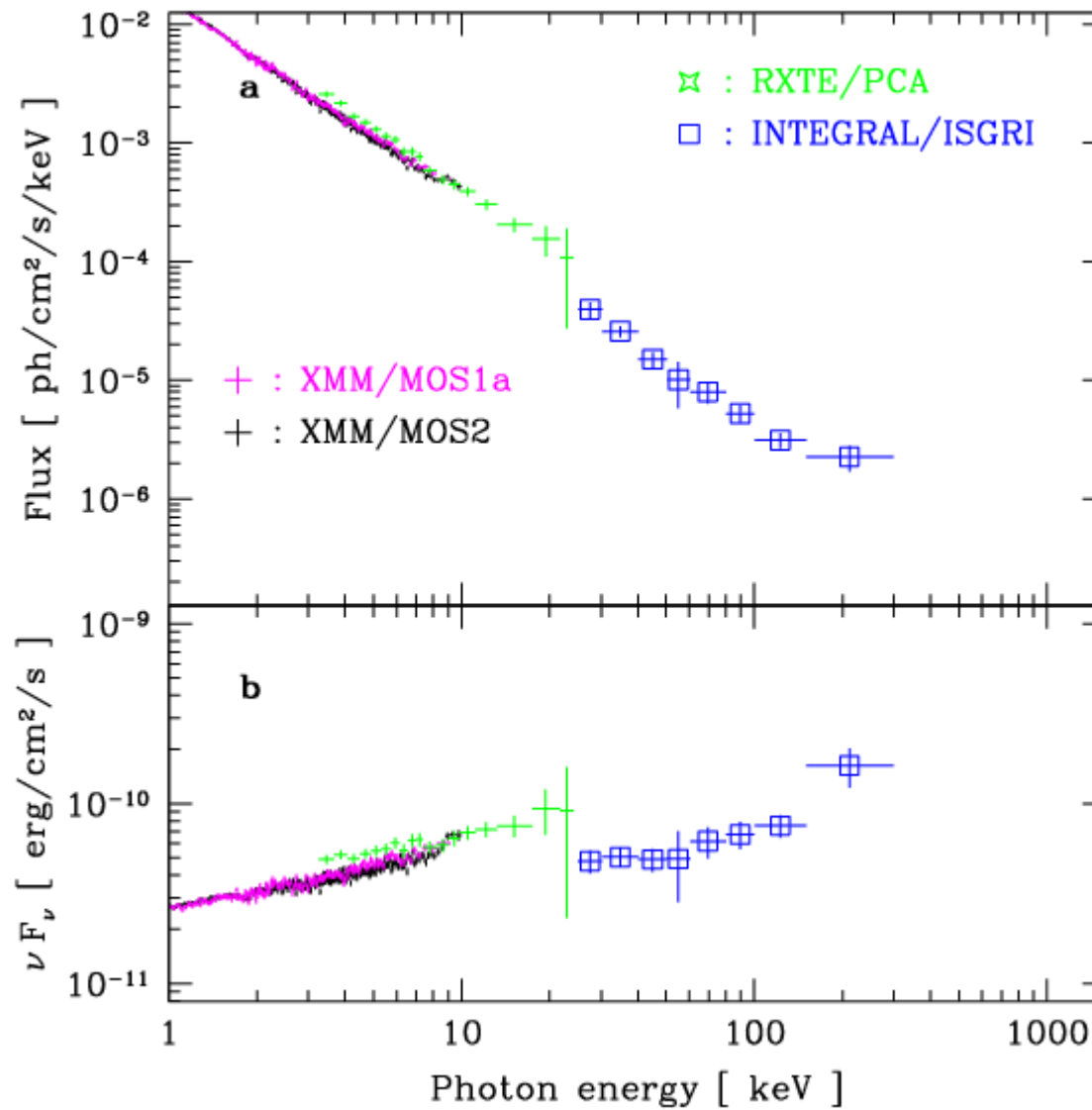
$$\bar{F} = \frac{\sum \left(\frac{F_i}{V_i} \right)}{\sum \left(\frac{1}{V_i} \right)}$$



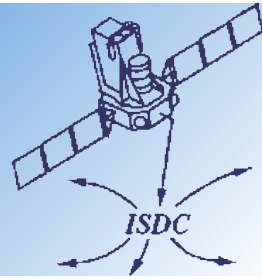
Results



“Raw data” - no intercalibration



Results



Intercalibration is taken into account

